

— Spring 2025 —

Psychology Department Newsletter

Bi-annual newsletter of the Department of Psychology at CSUCI



INSIDE THIS ISSUE

- Message from the chair
- What's new in the psychology department?
- Speaking aloud study with our visiting Fulbright Scholar
- Exploring psychology this summer
- Falling for psych: What's on the schedule for Fall 2025?
- Student & faculty accomplishments
 - Where our students are headed next
 - Faculty spotlight: Dr. Volkan
 - Psychology students & faculty at the WPA convention
 - Psychology Spring 2025 poster session
- Updates from our student groups
 - Psi Chi student updates
 - Building community in the Psychology Transfer Learning Community (TLC)

Message from the chair

By *Kimmy Kee-Rose, Ph.D.*
Professor and Chair of Psychology



Dear CSUCI Psychology Community,

I am delighted to welcome you to the Spring 2025 edition of our departmental newsletter. The longer days and changing landscapes are a reminder of the energy that spring brings, similar to the energy I see every day from our students and faculty.

Our department continues to thrive thanks to the dedication and hard work of our community. This newsletter offers just a glimpse into the innovative research, creative scholarship, and collaborative projects taking place in Psychology at CSUCI. I hope you enjoy reading about the milestones we have reached and the momentum we are building.

I would also like to extend a warm invitation to join me for “*Chat with the Chair*” office hours on Thurs., May 8 from 11:00 am to 1:30 pm in Madera Hall, Room 2617. Whether you have ideas, feedback, or simply want to catch up, I look forward to connecting with you.

To our graduating seniors, you have reached an exciting milestone, and we are so proud of you. As you take the next steps in your journey, we would love to hear from you. Your stories inspire us and future generations of Dolphins. For those returning in Fall 2025, I am already looking forward to another year of growth together. Your presence makes this department the dynamic place it is.

Wishing you all a productive end to the semester.



Psychology Department Honors

Congratulations to **Dalton Forrester** and **Skye Honor**, who have been nominated by faculty as this year's recipients for Psychology Department Honors!

What's new in the Psychology Department?

MA in Psychology Program - Launching Fall 2026

Professors of Psychology have been working rigorously on producing the MA in Psychology program here at CI! You can read more about it here:

<https://psych.csuci.edu/masters.htm>

Visiting Fulbright Scholar

As part of the Fulbright Scholarship Program, Karolina Broś will be visiting CSUCI for 3 months to implement a motion capture project involving the deletion and/or retention of final consonants in American English by monolingual and heritage Spanish speakers. The project is being implemented jointly with Dr. Peter Krause. Read more about their project on page 4.

PSYConnect Event Builds Community and Connections

On March 25th, the Psychology Department, in collaboration with the academic counselors at the Advising Center, hosted its annual Psychology Meet-and-Greet event. This gathering brought together Psychology freshmen, sophomores, new transfer students, and “undeclared” students interested in exploring the Psychology program. The event provided a valuable opportunity to connect with fellow students, faculty members, academic advisors as well as Psychology Club and Psi Chi representatives. Attendees heard from the Department Chair, professors, and advisors, gaining insight into the major and receiving tips for a smooth transition to university life. Students found that the event fostered a strong sense of community and support within the Psychology Department.



Speaking Aloud Study at CSUCI

By *Karolina Broś*


American English is well-known for optional /t d/ deletion in connected speech, as in best [bes] man, kept [kep] going or whipped [wip] butter. However, different studies have led to varying conclusions concerning the conditioning of the process and its categoricity. Research shows that even in the absence of an acoustic trace of /t d/, articulatory gestures related to the alveolar constriction are still there although they may be of a smaller magnitude, which questions the completeness of deletion. Furthermore, there is research on the relative frequency of /t d/ deletion depending on the population which indicates that heritage Spanish speakers, and especially Chicano Spanish speakers, have particularly high deletion rates.

The aim of my CSUCI study is to look at /t d/ as produced by monolingual and bilingual speakers from California to see how these sounds are produced and whether there are meaningful group differences. Importantly, together with Dr Krause, we use video lip tracking combined with ultrasound tongue visualization to elicit a large data sample from a sizeable number of participants.

In the course of the study, we tested 46 participants (23 from each population group). Each person had to produce 320 sentences containing regular verbs ending in a bilabial sound (p, b or m), produced either in the present or the past tense and followed by another bilabial or a vowel (e.g. stop making, stop eating, stopped making, stopped eating). The idea was to elicit pronounced and unpronounced /t d/ and look at the way the lips and the tongue coordinate movements in the process.

In our analysis of speech production and planning, we will be comparing acoustically audible sounds, inaudible sounds accompanied by lip aperture (incomplete deletions) and inaudible sounds without lip aperture (complete deletions). This will make it possible to test lip tracking as a suitable, easy-to-implement method of data collection, and provide insight into the relative timing and coordination of speech gestures produced by different articulators (lips vs. the tongue) and in different populations.





Explore Psychology This Summer

Want to make the most of your summer? Consider taking a class to move closer to meeting your graduation requirements. Summer courses are 5 weeks long and available in two sessions: the first half of summer (session A) or the second half (session B). These courses are offered online in synchronous or asynchronous modalities. Check with financial aid to see if you're eligible to use aid for summer classes. [You can find the full schedule here.](#) Please note that course offerings are subject to change.

Registration: Begins March 25

Summer Session A: May 27 to July 1

Summer Session B: July 7 to August

8

- PSY 300 - Psychological Research & Statistical Methods I
- PSY 301 - Psychological Research & Statistical Methods II
- PSY 313 - Clinical and Abnormal Psychology
- PSY 314 - Behavioral Neuroscience
- PSY 315 - Child Psychopathology
- PSY 317 - Theories of Personality
- PSY 318 - Learning, Cognition & Perception
- PSY 340 - History & Psychology Of Nazi Germany
- PSY 370 - Fundamentals of Counseling Theory
- PSY 445 - Adolescent Development

Falling for Psych: What's on the Schedule for Fall 2025

Core Classes:

- PSY 100 - Introduction to Psychology
- PSY 202 - Biostatistics
- PSY 213 - Developmental Psychology
- PSY 300 - Psychological Research And Statistical Methods I
- PSY 301 - Psychological Research And Statistical Methods II
- PSY 310 - History And Systems Of Psychology
- PSY 312 - Social Psychology
- PSY 313 - Clinical And Abnormal Psychology
- PSY 314 - Behavioral Neuroscience
- PSY 317 - Theories Of Personality
- PSY 318 - Learning, Cognition And Perception

Electives:

- PSY 220 - Human Sexual Behavior
- PSY 315 - Child Psychopathology
- PSY 327 - Parenting
- PSY 346 - Human Motivation
- PSY 370 - Fundamentals Of Counseling Theory
- PSY 411 - Navigating Careers in Psychology*
- PSY 445 - Adolescent Development
- PSY 457 - Criminal Behavior
- PSY 460 - Addiction Studies
- PSY 461 - Special Topics in Development
- PSY 492 - Internship Or Service Learning
- PSY 494 - Independent Research In Psychology
- PSY 497 - Directed Study In Psychology



Important Dates for Fall Classes

Registration: Begins April 15, 2025 for priority groups
Classes begin: August 23, 2025

Where Our Students Are Headed Next

Congratulations to the Psychology students who will be attending graduate programs at the following schools in Fall:

- California Lutheran University
- CSU Humboldt
- CSU Long Beach
- CSU Northridge
- CSU San Bernardino
- Loma Linda University
- San Diego State University
- Texas State University
- Claremont Graduate University
- University of Virginia

Psychology students were also accepted to participate in competitive summer research and internship programs, including at the UCSB-CSU Summer Research Institute, as a Cal State DC Scholar in Washington D.C., and in the Broadening Participation in Social Inequality Research program at UC Davis.

Faculty spotlight: Recent work by Dr. Volkan

Congratulations to Psychology Professor Dr. Volkan on his recent book publication and presentations:

- [Volkan, V. D., & Volkan, K. \(2025\). Human Aggression and War. Pitchstone Publishing.](#)
- Volkan, K. (2025). Large Group Psychology and Human Aggression. Dallas Society for Psychoanalytic Psychology. April 26.
- [Volkan, K. \(2025\). Dr. Kevin Volkan on Narcissism, and World Leaders. Dr. Wendy Walsh Show, KFI AM. March 23.](#)
- [Volkan, K. \(2025\). Pathological Narcissism, Bunkers, and Monuments. University of California Santa Cruz. March 10.](#)

Human Aggression,
War
and
Genocide



The Psychological Roots of Violence

Vamık D. Volkan and Kevin Volkan

Student Research Involvement

Psychology students and faculty have been actively engaged in research, including recent presentations at the National Association for Chicana and Chicano Studies conference in Albuquerque, and the CSU Student Research Competition at Cal Poly Humboldt. Next month, nearly 50 different faculty and students from CI will be presenting at the WPA conference in Las Vegas (see page 9).

Teranishi Martinez, C., Vaca, J., Acebo, K., & Fabian, M. (2024, April). Inspiring a paradigm shift to protect Pachamama: A mind, body, spiritual journey through Peru. Presented at the National Association for Chicana and Chicano Studies conference. Albuquerque, NM.



Cal Poly
Humboldt.
39TH ANNUAL CSU
STUDENT RESEARCH
COMPETITION
APRIL 25-26, 2025

The California State University Student Research Competition is an annual event that brings together scholars from the 23 campuses of our California State University system. The competition showcases undergraduate and graduate research, scholarship, and creative works by recognizing outstanding student accomplishments across the 23 campuses. In 2025, Cal Poly Humboldt will be hosting the system-wide competition for the first time ever!

Adriana M. Calatayud and Dylan Wikel will be presenting their work with Dr. Krause at the 39th annual CSU Student research Competition at Cal Poly Humboldt, titled “Timing of Consonant and Vowel Articulation When Reading Aloud Primed Words”

Psychology Students & Faculty Shine at Western Psychological Association (WPA) Convention

Exploring Physiological and Behavioral Responses to Natural Disasters Through a Virtual Reality Simulation by Christy Teranishi Martinez, Andrew Hart, Melanie Salazar, Jacquelin Vaca, Robert McEachron, Kaelie Acebo, Gabriel Hernandez, Elizabeth Quintero, Matthew Fabian, Beatrice de Oca

The Effect of Estrogen and Stress on Executive Function by Nycherie Hong, Rosalinda Arias, Rebekah Buley, Susan Beers, Barbara Thayer

Advancing Campus Climate Assessments: A Review of Current Practices and Recommendations for Improvement by HyeSun Lee

Parental Attitudes About Medication Use in Youth by Danielle Ford, Argero Zerr

Birds of a Song Sing Together: Adaptive Choices in the Use of Shared Vocalizations that Indicate Age by Francisco Magdaleno

Breaking the Silence of Sexual Harassment and Assault among Trail and Ultrarunners through Cycles of Inquiry and AI Assessment by Christy Teranishi Martinez, Crista Tappan, Juliane Martinez (UCLA), Harley Baker

Self-Concept Among Emerging Adults Considering Acculturation Gap Conflict and Family Dynamics by Gema Barroso, Argero Zerr, Adriana M. Calatayud, Vanessa Feazell

Relationships among Worldview, Math Self-Concept, and Math Anxiety by Susan Beers, Kai Rice, Cole Parkin, Skye Honor

Shifting Perceptions: How Psychoeducational Assessments and Social Support Relate to Parents' Views on Neurodiversity by Sofia Luna, Argero Zerr

Evaluation of Budtender Recommendations to Medical Cannabis Patients by Marshall Mee, Jesus Maldonado, Jenna Jimenez, Thomas A. Clobes

The Relationship between Extracurricular Involvement, Technology Use, and Academic Performance by Emily Centeno, Sofia Luna, Argero Zerr, Ian Villalta (University of San Diego)

Reevaluating Baseline Measures for Grant Programs' Impact Assessments: Use of Retrospective Self-Assessments by HyeSun Lee, Weldon Zane Smith

The Impact of Reel-Watching Frequency, Fear of Missing Out, and Social Comparison on Emotion Regulation in College Students by Irene Jordan, Argero Zerr

The Impact of Gratitude on Psychological States and Heart Rate Variability: Insights from the Neurovisceral Integration Model by Gabriel Hernandez, Ariadna Piedra, Elizabeth Quintero

The Impact of Differential Item Functioning when Shortening Scales with Machine Learning by Weldon Zane Smith, HyeSun Lee

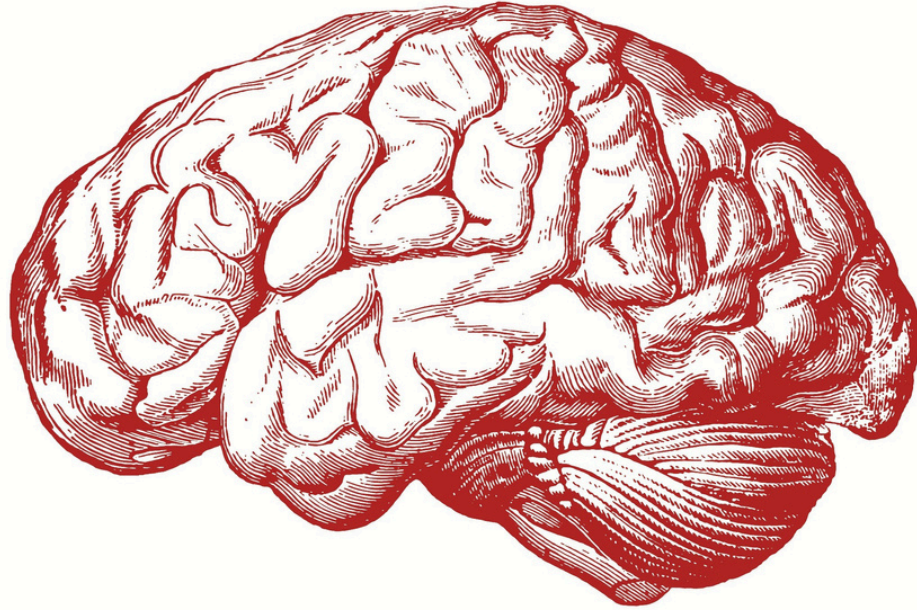
An Examination of Demographics and Hope as Factors in Climate Change Distress and Impairment by Marshall Mee, Argero Zerr

Self-Investment and Initial Worldview Moderate Affective Responses to Challenges to Worldview by Saima Valdivia, Leah Jones, Josie Midkiff, Susan Beers



Psychology

Spring 2025 Poster Session



Friday, May 9, 2025

1:00 - 2:30 PM

Grand Salon

The Psychology department is proud to announce the Spring 2025 Psychology Poster Session! This event highlights students' empirical studies conducted as a culminating assignment in the PSY 301 course.

\$6.00 for campus parking

For more information, please contact
Ivy McKinley (ivy.mckinley@csuci.edu),
Academic Program Analyst for
Psychology

Check in here:



PSYCHOLOGY
CHANNEL
ISLANDS

Psi Chi Student Updates

By Nycherie Hong,
Psi Chi President



Psi Chi, the International Honor Society in Psychology, strives to encourage and support students to advance the field of psychology. At CI, our members learn about enhancing education strategies, high-impact opportunities on campus, connecting with alumni, and practical psychological practices. This year 19 new members were inducted into the society. These members expressed true academic excellence and perseverance.

This semester, Psi Chi has been all about supporting students' academic and career growth while fostering an engaging and interactive space! We kicked things off with a presentation all about the CAPS Peer Mentor Program, where a peer mentor discussed the program and shared helpful tips about how to join this esteemed campus experience. At another meeting, members learned about health study habits to help them succeed in their upcoming exams and projects. This semester, we have also been trying to reach out members off campus providing them with a virtual Alumni and Graduate Student Panel! At our latest meeting, members learned about the mental status exams in the clinical settings.

Psi Chi meetings are open to all students regardless of membership status! We hope to continue fostering a welcoming environment for all interested in Psychology!

Congratulations to our graduating officers:

President - Nycherie Hong

VP - Andrew Hart

Treasurer - Ari Castro Piedra

Secretary - Rebekah Buley

Congratulations to our newly elected officers:

President - Monique Calatayud

VP - Marshall Mee

Treasurer - Ericka Loza-Lopez

Secretary - Maddy Gonzales



Building Community in the Psychology Transfer Learning Community (TLC)

By Maddy Gonzales

Being a part of the TLC program has been such an amazing experience and such a wonderful opportunity to be a part of. The transition from community college to university can be a challenging transition and I know from personal experience, it was one I was a bit worried about. The TLC has been such a great tool for the transition into university as the advisors provide so many resources, graduation school tips and prep, planned out classes, research and internship opportunities, as well as a great group of fellow TLC scholars to work with and create a strong bond and connection with.

One of the best additions to being a part of the TLC is the close connections you make. The advisors create a very warm and welcoming experience, with monthly one-on-one meetings, and group meetings, as well as weekly office hours to provide guidance, tips, and any support you may need academically or professionally in planning out your future career. Aside from the advisor's welcoming demeanor, it has been so nice to have a group of fellow TLC students to connect and bond with in every class together through our first year at CI. I have made many friendships through this program, and having every class together makes it easy for us to create study groups, work on group projects together, as well as communicate with each other about upcoming assignments or due dates.

Overall, the TLC program has been a great experience that has brought many opportunities, brought me a great group of friends, as well as helped me academically bringing many academic opportunities and achievements. Without the TLC and the immense amount of guidance and support from our advisors, I do not think I would be where I am in my academic career today. If you are an incoming transfer student maybe not too sure about what the transition will be like or maybe unsure of what classes to take or how to make connections, I 100% recommend you to become a part of this program, you will not regret it!

